

Internet Control Server

Secure your IT



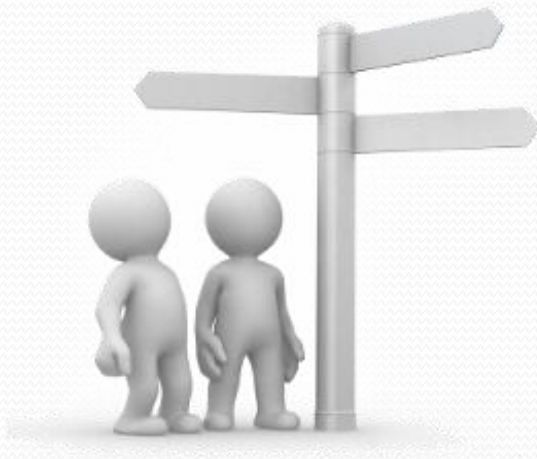
InTouch FZE, P.O. Box 334155
Dubai, United Arab Emirates
Phone: +971 4 455 8611

Our social responsibility



- ✓ How much harmful content is on the Internet?
- ✓ How often our children come across it?
- ✓ Are there authorized people to publish it?
- ✓ How fast new one appear?
- ✓ How our own children protected from bad content?

Online safety of our children:



- ✓ Build-in and pluggable category-based harmful content filtering
- ✓ Build-in transparent AntiVirus and AntiSpam filters for safe browsing and emails
- ✓ Per user/pupil Data screening, accounting and reporting

What is ICS?



✓ Centralized Internet Gateway integration solution



✓ Remote support and management;

✓ ICS combines routing, proxy, traffic accounting, user access rights, web, mail, ftp server, VPN etc...

✓ Intuitive web-management browser interface



✓ Reliable FreeBSD Unix platform on any PC/Server

ICS for children



- ✓ Automatic traffic allocation, filtering, quota support, reporting and accounting under one flexible web interface
- ✓ Reduce and control of non education-related time waste
- ✓ Always-on Secure UNIX Firewall and Reliable Gateway

For school educational process

- ✓ Build-in File, Web and mail servers for internal/external school projects



- ✓ Photo Gallery for School events, Wikipedia for school knowledge-base, Forum for collaborative approach and interaction of students, parents and teachers

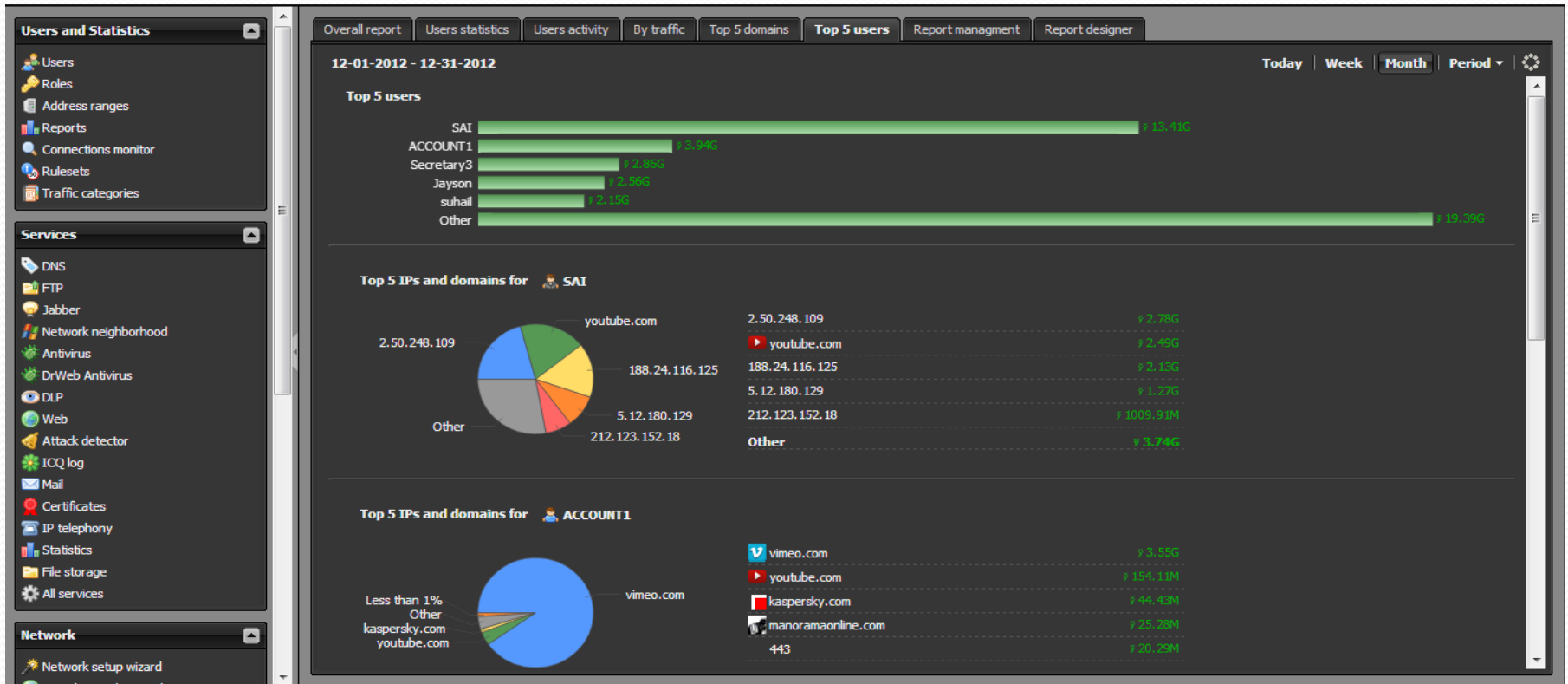
- ✓ Secure Web Server and VPN for tutors and parents for access provision to school resources & billing information

ICS for School Management:



- ✓ Intuitive user-friendly web interface for management and resource allocation
- ✓ Secure access from anywhere in the world to internal School resources (VPN, SSL)
- ✓ Piece of mind protected by secure and robust Unix-based Internet Gateway

ICS Web Interface (user and URL stats)



ICS Web Interface (users traffic)

The screenshot displays the 'Users' section of the ICS Web Interface. The left sidebar contains navigation menus for 'Users and Statistics' and 'Services'. The main area shows a table of users with their traffic statistics for a specific date (12-12-2012). The table has columns for Name, Traffic per day, Traffic per week, and Traffic per month. Each row represents a user, and the traffic values are shown with up and down arrows indicating changes.

Name	Traffic per day	Traffic per week	Traffic per month
Jayson	▼ 256.39M ▲ 10.59M	▼ 462.72M ▲ 31.25M	▼ 1.72G ▲ 136.34M
Account2	▼ 219.87M ▲ 4.81M	▼ 414.90M ▲ 19.80M	▼ 889.50M ▲ 46.58M
Account6	▼ 156.92M ▲ 5.62M	▼ 335.92M ▲ 17.77M	▼ 1.10G ▲ 61.61M
Secretary2	▼ 131.72M ▲ 2.56M	▼ 432.66M ▲ 13.62M	▼ 1006.30M ▲ 38.06M
Account3	▼ 107.24M ▲ 3.25M	▼ 250.54M ▲ 7.62M	▼ 641.38M ▲ 24.62M
suhail	▼ 96.10M ▲ 8.23M	▼ 390.59M ▲ 34.75M	▼ 1.11G ▲ 103.96M
Secretary3	▼ 64.24M ▲ 2.60M	▼ 409.92M ▲ 33.80M	▼ 1.98G ▲ 78.98M
eid	▼ 55.23M ▲ 7.70M	▼ 144.14M ▲ 15.18M	▼ 457.99M ▲ 39.88M
Secretary1	▼ 52.27M ▲ 7.30M	▼ 307.36M ▲ 56.14M	▼ 1.16G ▲ 138.15M
PRC	▼ 31.56M ▲ 4.49M	▼ 129.77M ▲ 27.44M	▼ 323.61M ▲ 67.99M
helena	▼ 30.40M ▲ 5.86M	▼ 160.14M ▲ 33.29M	▼ 389.49M ▲ 114.54M
LEB	▼ 29.10M ▲ 2.73M	▼ 110.59M ▲ 21.14M	▼ 454.41M ▲ 38.52M
Technical3	▼ 26.99M ▲ 2.32M	▼ 179.40M ▲ 17.16M	▼ 414.67M ▲ 43.76M
servicedesk	▼ 25.94M ▲ 2.22M	▼ 61.92M ▲ 5.11M	▼ 346.05M ▲ 20.02M
MGHEORGHE	▼ 20.98M ▲ 6.77M	▼ 93.72M ▲ 37.35M	▼ 220.66M ▲ 86.92M
SHERR	▼ 17.97M ▲ 450.90K	▼ 287.05M ▲ 24.65M	▼ 1.20G ▲ 56.49M
CHRIS	▼ 17.80M ▲ 1.30M	▼ 39.25M ▲ 5.23M	▼ 173.19M ▲ 22.99M
Designer	▼ 11.20M ▲ 13.84M	▼ 454.19M ▲ 32.52M	▼ 778.77M ▲ 117.27M
Account5	▼ 10.98M ▲ 2.04M	▼ 43.43M ▲ 3.63M	▼ 96.26M ▲ 14.84M
Sales2	▼ 6.88M ▲ 1.18M	▼ 36.74M ▲ 47.30M	▼ 171.26M ▲ 111.51M

36 users Statistics for 12-12-2012

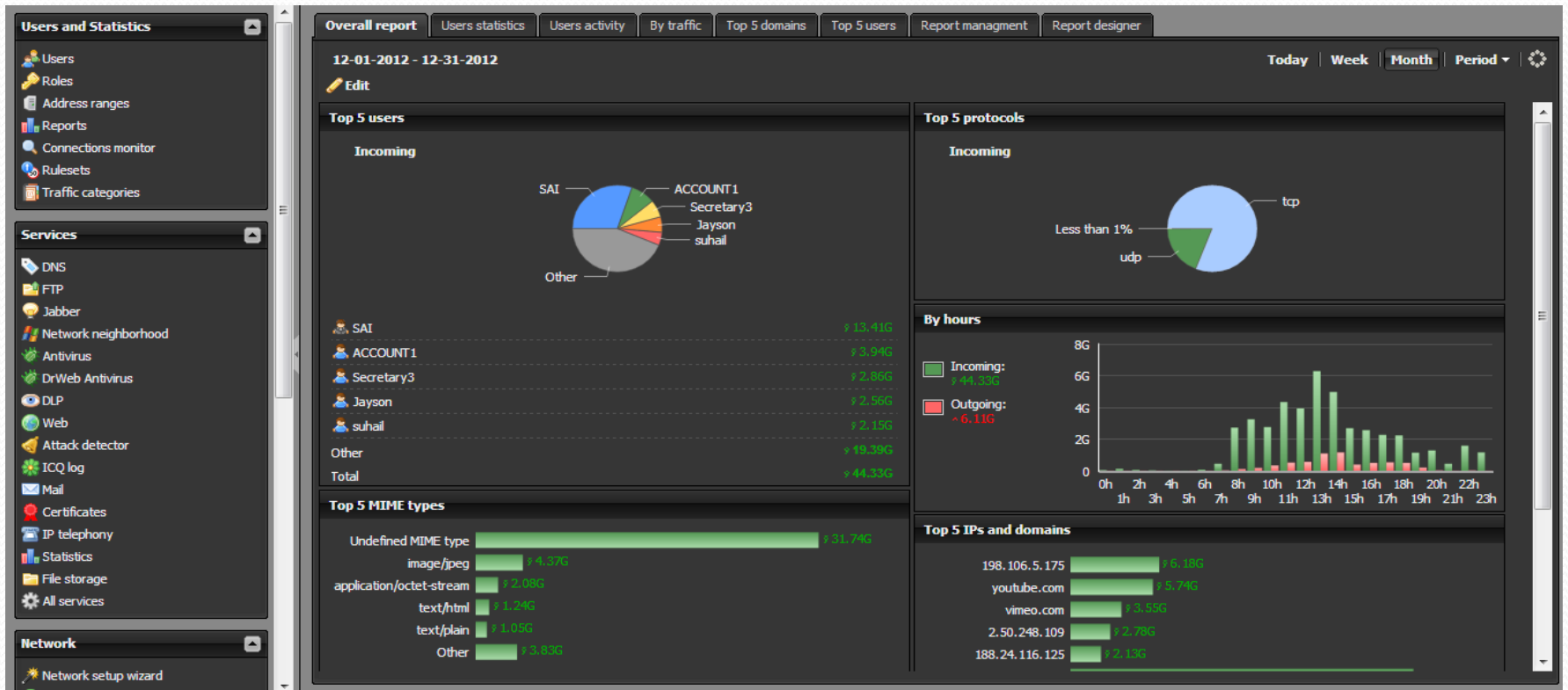
ICS Web Interface (Firewall rules)

The screenshot displays the ICS Web Interface for Firewall Rules. The interface is divided into three main sections:

- Left Sidebar:** Contains navigation menus for "Network" (including Network setup wizard, Providers and networks, ARP table, DHCP, VPN, Routes, Firewall, Proxy, Port forwarding, Network tools) and "Maintenance" (including Monitoring, Time and date).
- Central Panel:** Shows the "Rules" configuration page. It features a tree view on the left with categories: "All interfaces (31 rules)", "DMZ (4 rules)", "External interfaces (16 rules)", "router (1 rule)", "Internal interfaces (7 rules)", "Belhasa (1 rule)", "Local Network (1 rule)", "WIFI Direct", "Tunnels", and "VPN interfaces (4 rules)".
- Right Panel:** Displays a list of "Permitting rules" under the "Rules" tab. Each rule includes an up arrow icon, a title, and a description of the traffic allowed.

Rule Name	Description
Access to the mail server	Allow TCP traffic, incoming to ICS to port SMTP port, IMAP port, POP3 port through External interfaces
Access to the VPN server	Allow TCP traffic, incoming to ICS to port pptp through External interfaces
Access to the WEB server	Allow TCP traffic, incoming to ICS to port Web server port through External interfaces
Access to the FTP server	Allow TCP traffic, incoming to ICS to port FTP port through External interfaces
Access to the DNS server	Allow UDP traffic, incoming to ICS to port dns through External interfaces, Local Network
Access by ICMP protocol	Allow ICMP traffic, incoming to ICS through External interfaces
Access for passive FTP	Allow TCP traffic, incoming to ICS to port Ports for passive FTP through External interfaces
Access to the server via GRE tunnels	Allow GRE traffic, incoming to ICS through External interfaces
Access to shared windows resources	Allow TCP traffic, incoming to ICS to port 139, 445 through External interfaces

ICS Web Interface (Overall report)



ICS Web Interface (dashboard)

The dashboard is organized into several sections:

- Users and Statistics:** A sidebar menu with options like Users, Roles, Address ranges, Reports, Connections monitor, Rulesets, and Traffic categories.
- Users:** Shows 36 users, 0 disabled, 0 blocked, and 18 online.
- Statistics:** Displays traffic volume: per day (+1.69G, -110.49M), per week (+6.12G, -546.50M), and per month (+23.00G, -4.69G).
- Security and access control:** Shows 0 attacks and 0 viruses.
- Providers and networks:** Shows internet access through a router with a ping of 139.736 ms and a load of +249.60K, -10.00K. There are 0 vpn connections.
- Mail and jabber:** Status is 'enable'.
- Web and FTP server:** Shows 0 virtual hosts and 33.11 G free.
- IP telephony:** Status is 'enable'.
- Monitoring and maintenance:** Shows system resources: CPU: 19%, RAM: 96%, Load: 0.28.
- Sites feed:** A list of recent activity logs for user SHERR, including URLs like ds.ds1ps.com/refer/cgdchat/operator/cweb.xml.
- System log:** A list of system events, such as 'The user Denis logged in from address 86.98.46.206' and 'Antivirus settings has been changed by user Denis'.

ICS features (Technical)



- ✓ Centralized Internet Gateway
- ✓ Complex LAN, VLAN, several interfaces accesses
- ✓ Dynamic and static routing
- ✓ IPSec and VPN connected Head Office, campus and individual users
- ✓ Web, Ftp, DCHP, Mail, File, Proxy, Time etc... servers
- ✓ Firewall, Intrusion prevention and Data Leakage Prevention
- ✓ Antivirus and Antispam

ICS features (continued)

- ✓ Ethernet, WiFi, 3G, PPTP, PPPoE, L2TP, VLAN and DMZ
- ✓ Multiple ISP support with priorities
- ✓ PPPoE\PPTP Virtual Private Networks
- ✓ GRE\IPIP-tunnels with IPSEC PSK, OpenVPN
- ✓ QoS (Quality of Service) prioritization
- ✓ IP-phone AND Dynamic DNS
- ✓ User screening and accounting



ICS features (continued)



- ✓ Authorizations by: IP, MAC, Proxy, Web, Active Directory Domain, VPN;
- ✓ IP address, ports and URLs filtration and quotas support;
- ✓ User/Group rights and rules
- ✓ SkyDNS and Content Filtering;
- ✓ Network Monitoring module;
- ✓ Layer 7 filtration (IDS and DLP);
- ✓ Regular updates
- ✓ etc...

ICS Advantages

Simplicity:

- ✓ Fully Automated setup and upgrades
- ✓ All functions under control from one web-interface

Flexibility:

- ✓ Management from any Internet PC
- ✓ 6 User authorization types supported

Versatility:

- ✓ No additional software required
- ✓ Network performance optimization

Security:

- ✓ Secure UNIX Firewall build-in
- ✓ DLP, IDS, Antispam and Antivirus (license required)
- ✓ Complete reporting and audit trail



Support

InTouch FZE



Level 14, Boulevard Plaza Tower One, Emaar
Boulevard, Downtown Dubai
P.O. Box 31027, Dubai, United Arab Emirates

Tel : + 971 4 455 8611
Fax : + 971 4 455 8556

Mail to: support@InTouch.ae
Visit: www.InTouch.ae

Internet Control Server

Secure your IT





Questions?